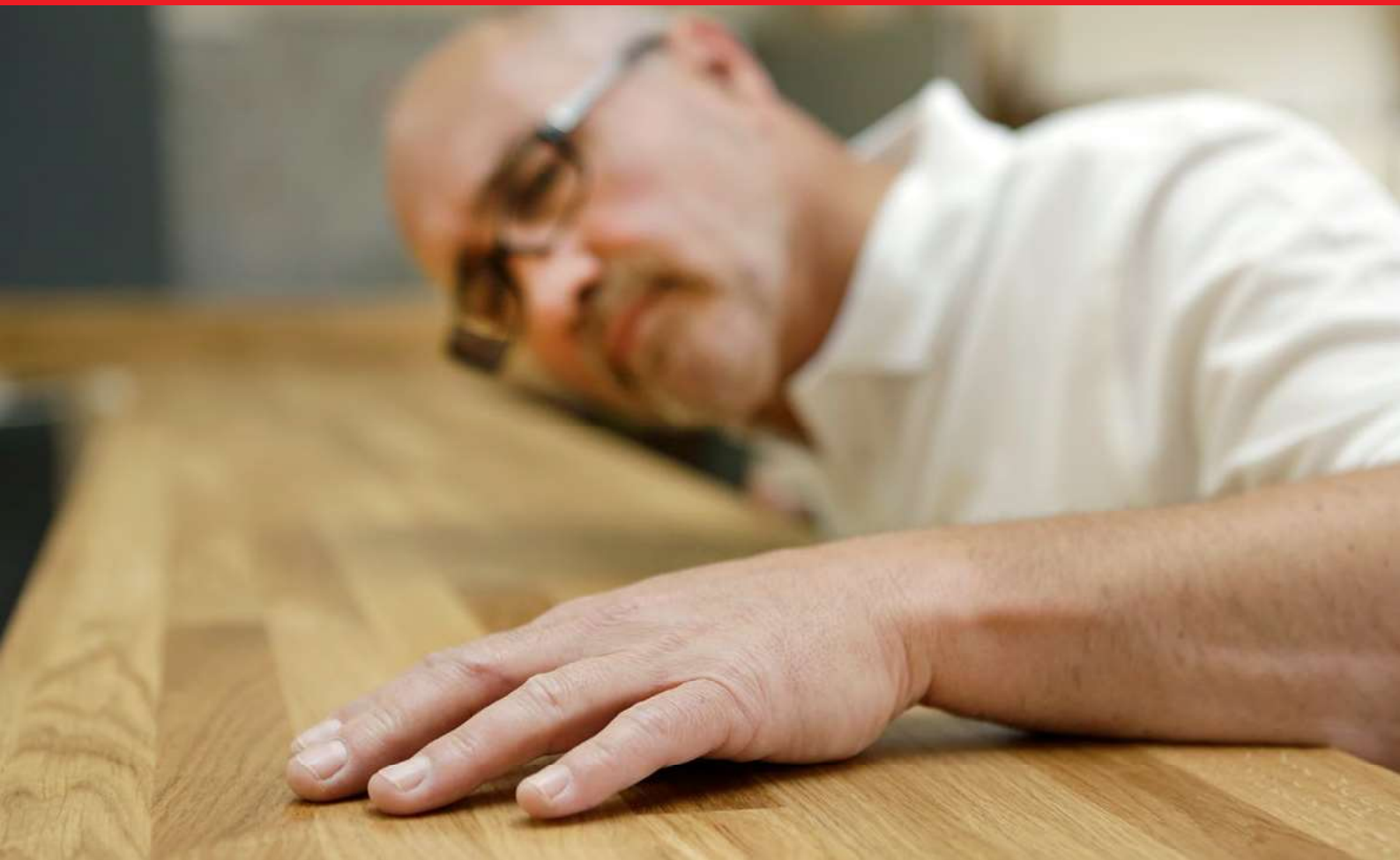


# **SANDING IN THE WOODWORKING INDUSTRY**

**The right finish from coarse to fine**



# EASIER, MORE EFFICIENT AND ALWAYS PERFECT

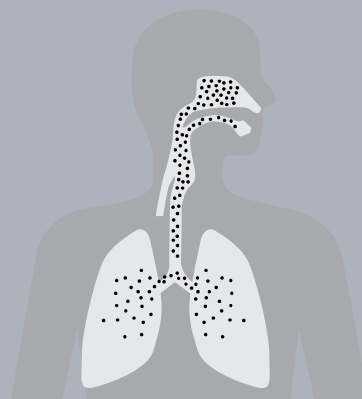
## Your path to finishing your masterpiece

When sanding wood, the final finish depends on a variety of different factors. An excellent finish does not only depend on good training, talent and experience, but also on the abrasives, hand and power tools used.

The careful selection and correct application of the abrasive are the basis for an optimum sanding finish. At the same time, the abrasive's service life will be extended for as long as possible. On the following pages, you will learn how sanding can be done more easily and effectively and with a minimum impact on the user's health.

Furthermore, this guideline contains a detailed overview of Würth hand sanding tools and their areas of application including a recommendation on different grit sizes. In this way, you may rest assured that the product used can bring its strengths to bear and support you best as you work on your masterpiece.

## CAUTION: WOOD DUST

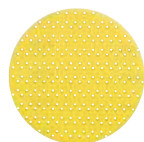


When sanding wood, many people do not consider possible risks and consequences. Wood dust is not only dangerous when it catches fire but also when it is inhaled. Depending on the type of wood, wood dust may lead to serious health problems. In particular when working with beech and oak wood you have to be careful, since these types of wood dust are proven to increase the risk of developing nasal cancer.

By using an effective extraction system and wearing a breathing mask, you can prevent harmful wood dust from entering your respiratory tract when sanding wood.

The customers' health is a top priority for Würth. Therefore, our hand sanding product range includes product and system solutions, which have you breathe safely. Our abrasives for power tools all feature an extremely efficient multi-hole system. Combined with the multi-hole sanding plate and a certified industrial vacuum cleaner, this system allows for the optimum and hazard-free extraction of developing wood dust directly where it occurs.

If extraction is not possible (e.g. when sanding with a hand sanding block), our wide range of breathing masks provides you with the necessary safety.



Abrasives



Multi-hole Velcro support plate



Random orbital sander



Pneumatic Sanders



**Maximum removal capacity**

With our products you have made the right choice!

Abrasives have to meet the most diverse requirements in different working steps. The application matrix shows which product helps you achieve the best finish in different areas.



## RANDOM ORBITAL SANDER

Abrasives		REDLINE Art. no. 00577 363 ...	ARIZONA® PERFECT Art. no. 05506 353 ...	RED PERFECT® Art. no. 00581 353 ...	NET PERFECT Art. no. 05506 393...
<b>Soft and hard wood</b>					
Pre-sanding					80-120
Fine sanding	Staining	P150-P180	P150-P180		80-120
	Oil finish				
	Wax finish	P150-P240	P150-P240		150-180
Painting	Primer	P150-P220	P150-P220		150-240
	Final varnish	P240-P500	P240-P600		150-220
	High gloss			P1000-P2500	240-400
<b>Wood veneer</b>					
Pre-sanding					80-120
Fine sanding	Staining	P150-P180	P150-P180		80-120
	Oil finish				
	Wax finish	P150-P240	P150-P240		150-180
Painting	Primer	P150-P220	P150-P220		150-240
	Final varnish	P240-P500	P240-P600		150-220
	High gloss			P1200-P2500	240-400
<b>MDF panels</b>					
Pre-sanding					120-150
Painting	Base coat/filler	P150-P220	P150-P220		120-150
	Final varnish	P240-P500	P240-P600		150-220
	High gloss			P1200-P2500	240-400
<b>OSB</b>					
Pre-sanding					120-150
Painting	Base coat/filler	P150-P220	P150-P220		120-150
	Final varnish	P240-P500	P240-P600		150-220
<b>Plywood</b>					
Pre-sanding					240-400
Painting	Base coat/filler	P150-P220	P150-P220		120-150
	Final varnish	P240-P500	P240-P600		150-220
<b>Mineral materials (artificial stone)</b>					
Pre-sanding					240-400
Matte					120-150
Semi-gloss					220
High gloss					
Mirror finish					



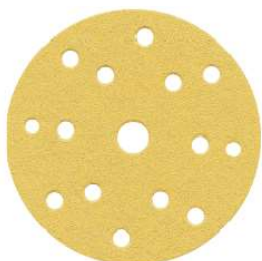
# REDLINE

Available grit sizes  
**P40 - P500**

## REDLINE

- For sanding new and old varnishes, fillers
- Short sanding time and efficient working thanks to the new stearate concept in the fine grit range from P220
- Fits all commercially available adhesive plates
- Dust-free working thanks to multi-hole pattern for greatly improved dust extraction

Art. no. 00577 363 ...



### We recommend:

Use this sandpaper to prepare the surface for painting/ profile sanding (staining or oil and wax finishes, primer and final varnishes)

- soft and hard wood
- wood veneer
- MDF panels
- oriented strand board (OSB)
- plywood

**Optimum: P150 - P600 grit size**



# ARIZONA® PERFECT

Available grit sizes  
**P40 - P600**

## ARIZONA® PERFECT

- For sanding new and old varnishes, fillers
- Short sanding time and efficient working thanks to the new stearate concept in the fine grit range from P220
- Fits all commercially available adhesive plates
- Dust-free working thanks to multi-hole pattern for greatly improved dust extraction

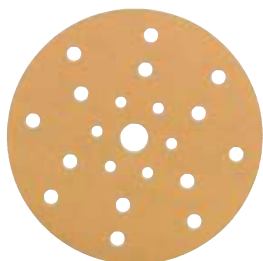
**Art. no. 5506 ...**

### We recommend:

Use this sandpaper to prepare the surface for painting/ profile sanding (staining or oil and wax finishes, primer and final varnishes)

- soft and hard wood
- wood veneer
- MDF panels
- oriented strand board (OSB)
- plywood

**Optimum: P150 - P600 grit size**





# RED PERFECT®

Available grit sizes  
**P80 - P3000**

- For grinding fillers and different paint systems
- No tearing or fraying of disc around edges and extraction holes thanks to the foil carrier
- Short sanding time and efficient working with great results
- Extremely high rate of material removal and long service life
- Fits all commercially available adhesive plates
- Dust-free working thanks to multi-hole pattern for greatly improved dust extraction

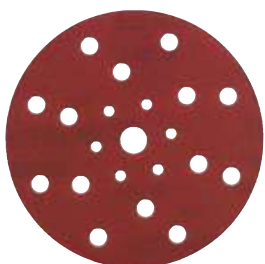
**Art. no. 0581 353 ...**

### We recommend:

Use this sandpaper to prepare the surface for painting

- primer
- final varnish
- high gloss

**Optimum: P1000 - P3000 grit size**



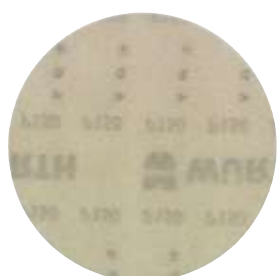


# NET PERFECT

Available grit sizes  
**P80 - P400**

- Net sanding disc for high material removal for sanding hard and soft woods, varnish, fillers
- The open structure of the net sanding disc allows for thorough extraction of sanding dust on the entire surface
- Fits all commercially available adhesive plates
- Dust-free working thanks to multi-hole pattern for greatly improved dust extraction

**Art. no. 5506 393 ...**



## We recommend:

Use this sandpaper for pre-sanding, fine sanding (staining or oil and wax finishes) and to prepare the following surfaces for painting (primer and final varnishes)

- soft and hard wood
- wood veneer
- MDF panels
- oriented strand board (OSB)
- plywood
- mineral materials (artificial stone) (pre-sanding and matte surfaces)

**Optimum: P80 - P240 grit size**